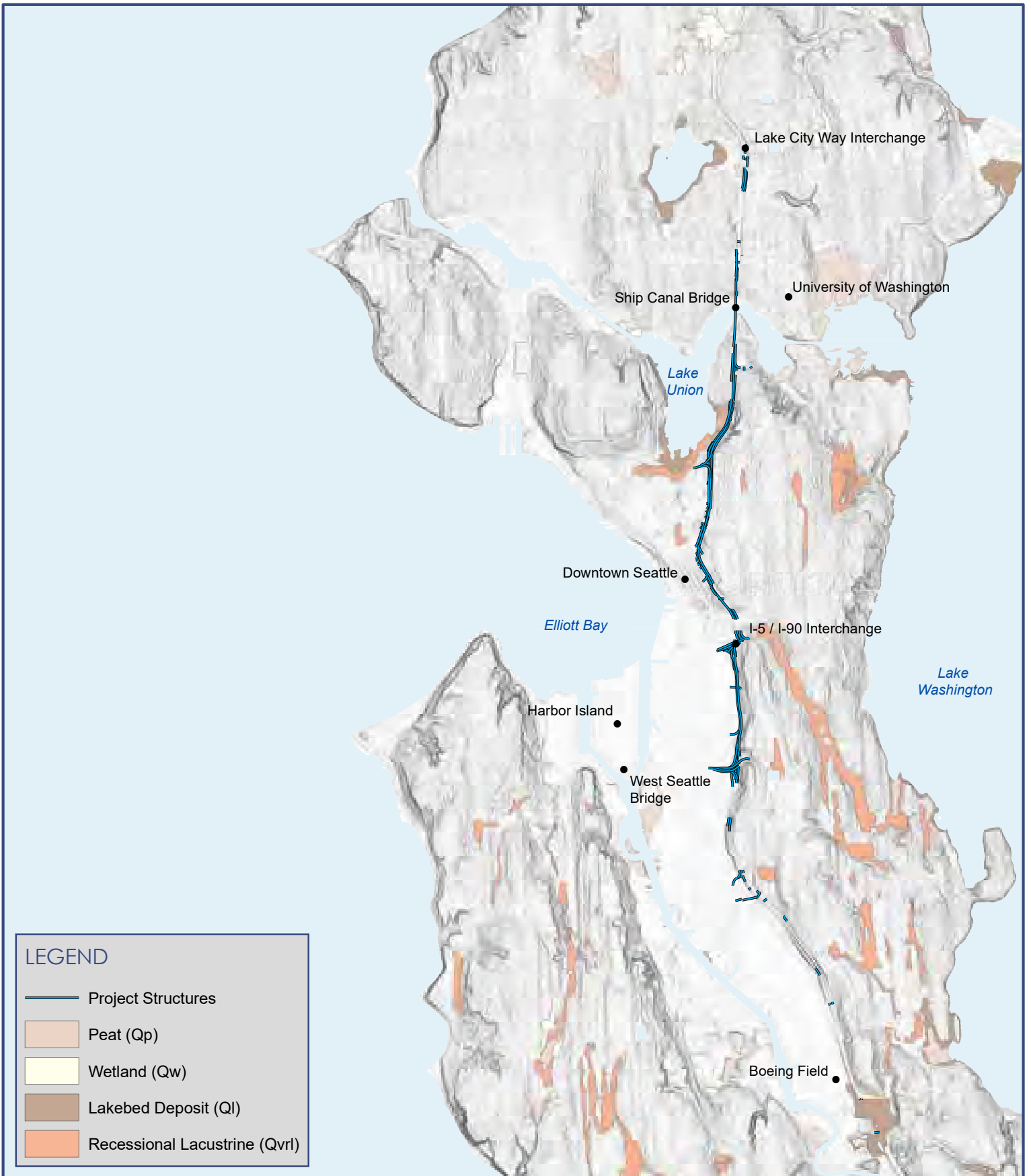


Appendix B: Geotechnical Hazard Maps



This page intentionally left blank.



LEGEND

-  Project Structures
-  Peat (Qp)
-  Wetland (Qw)
-  Lakebed Deposit (Ql)
-  Recessional Lacustrine (Qvrl)

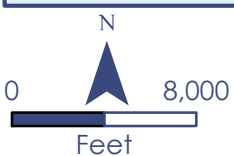
Notes:

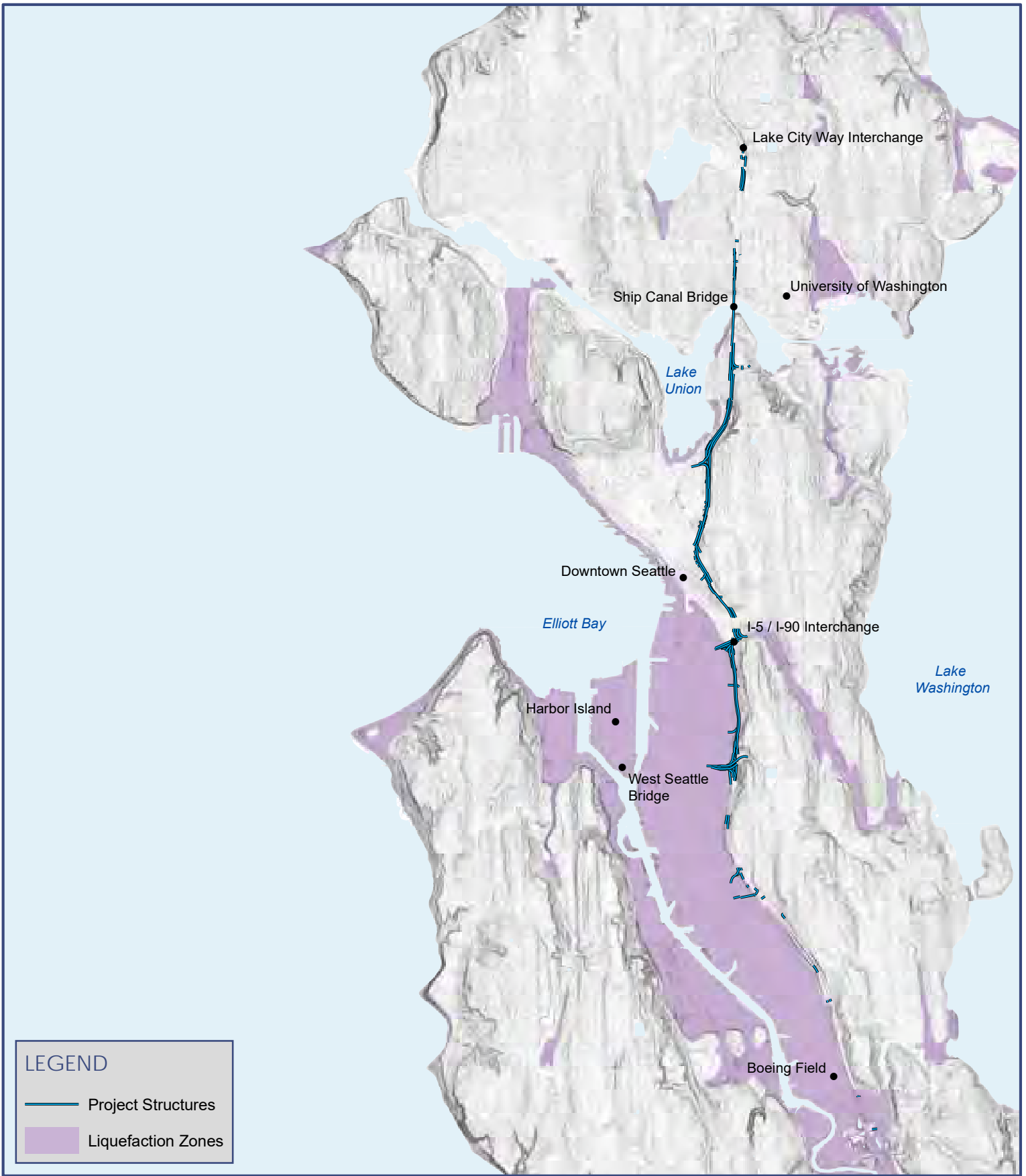
1. Geology from Troost et al. (2005) "The Geologic Map of Seattle – A Progress Report" and Booth et al. (2009) "Geologic Map of Northeastern Seattle"

November 2022

Figure 1

GeoHazards - Peat & Cyclic Softening





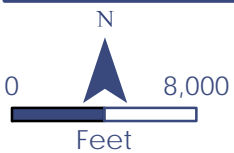
Notes:

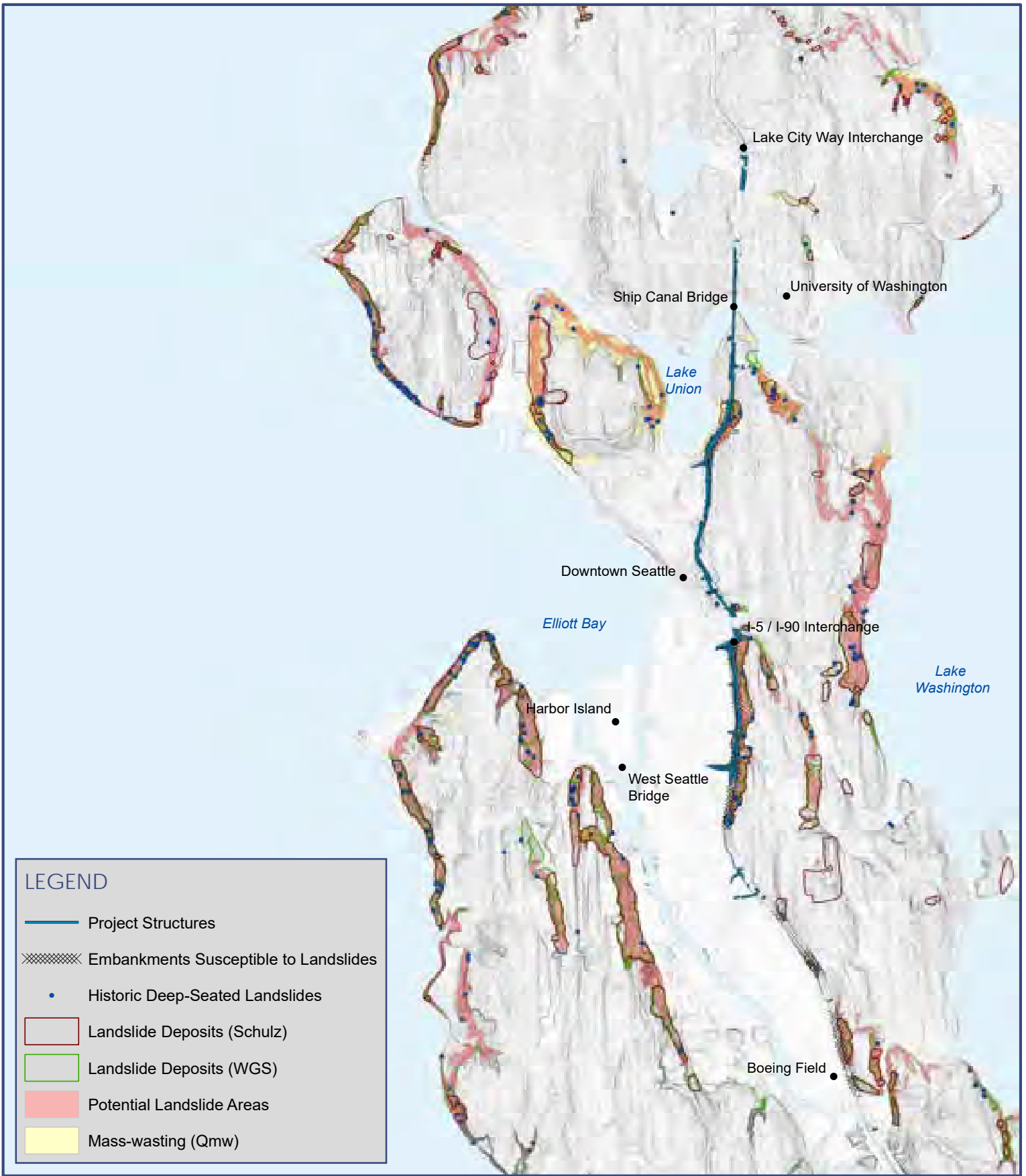
- 1. Liquefaction Zones from Seattle GeoData (2012) "Liquefaction Zones ECA"

November 2022

Figure 2

GeoHazards - Liquefaction





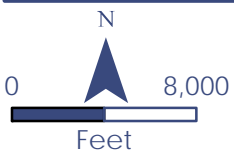
Notes:

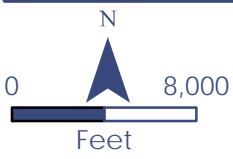
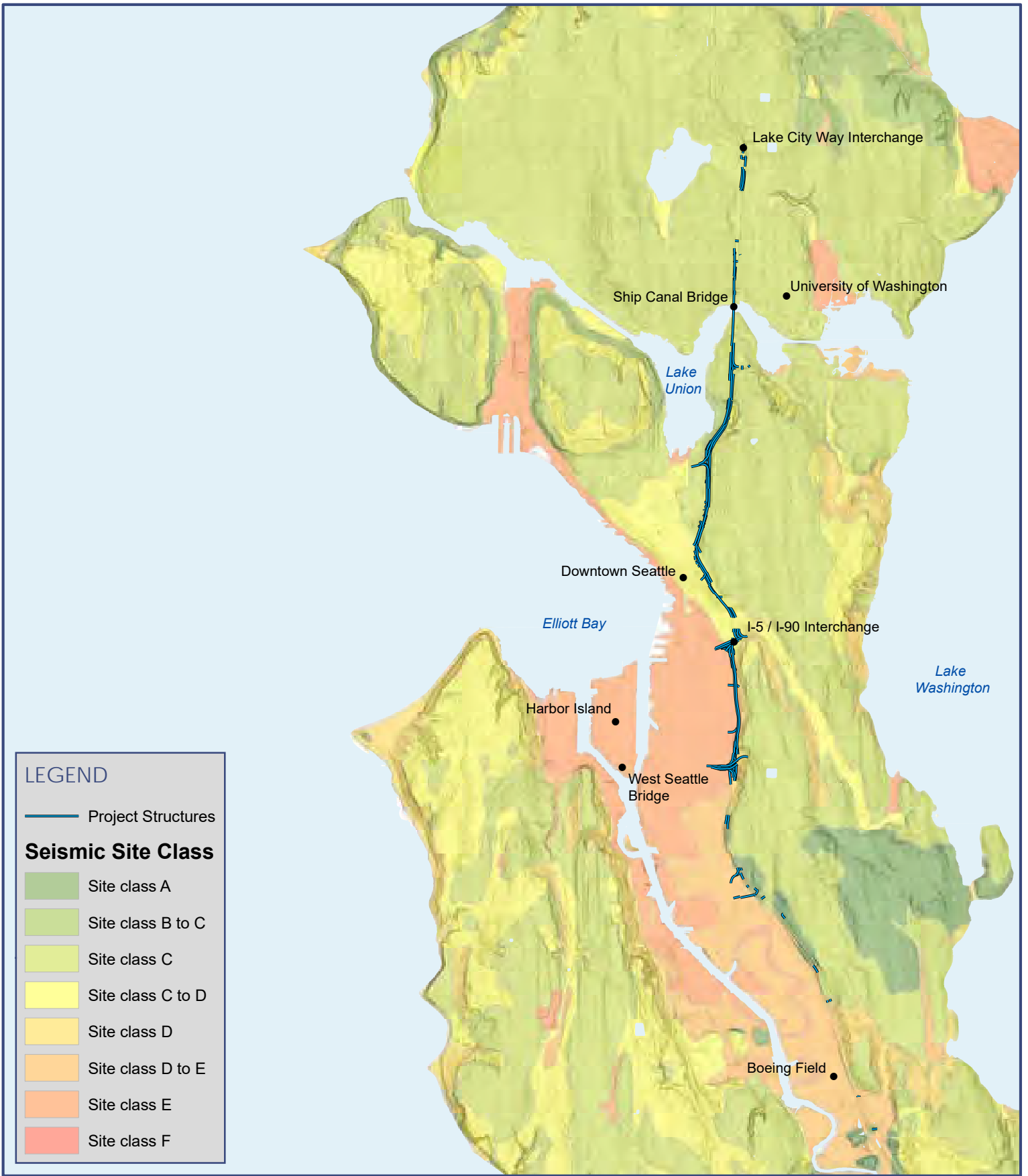
1. Historic landslide locations from Seattle GeoData (2012) Historic Landslide Locations ECA"
2. Landslide polygons from Schulz (2005) "Landslide susceptibility estimated from mapping using LiDAR" and WGS (2022) "Washington State Landslide Inventory Database"
3. Potential Landslide Areas from Seattle GeoData (2012) "Potential Landslide Areas"
4. Geology from Booth et al. (2009) "Geologic Map of Northeastern Seattle"

November 2022

Figure 3

GeoHazards - Landslides





Notes:

1. Site Class from DNR (2010) "Seismic Site Class"

November 2022

Figure 4
GeoHazards - Site Class